



# TRASH TALKING

Wyoming Association Of Municipalities

June 14, 2018

# Introductions



-----

**Travis Evans, PE**

Engineering Specialist  
Trihydro

Solid Waste Professionals of Wyoming



-----

**Craig McOmie**

Program Manager  
WDEQ

Cease and Transfer and  
Landfill Remediation



# Agenda



ISWMP Updates



Considerations – Waste Transfer & Closure



Cease and Transfer Program Update



Case Studies



Landfill Remediation Program Update



Funding Outlook

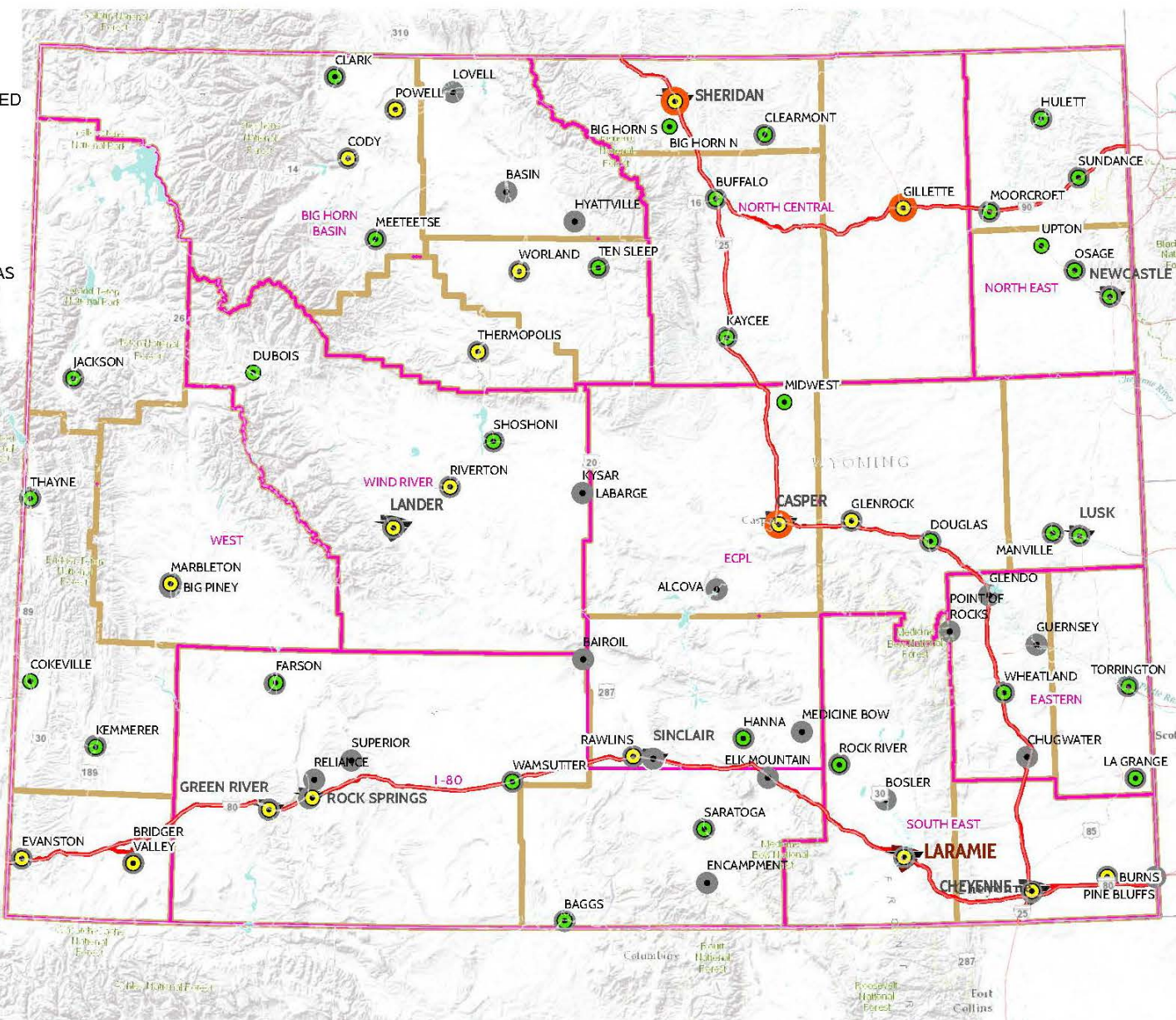


# ISWMP Updates

- Overview of ISWMP
- ISWMP's are required to be updated in 2019
- Who can update the Plan?



-  TYPE 1 (LARGE) LANDFILL
-  TYPE 2 (SMALL) LANDFILL
-  REMEDIATION LANDFILL - FUNDED
-  REMEDIATION LANDFILL - NON FUNDED
-  CORPORATE HEADQUARTERS
-  WYOMING OFFICES
-  STAFF RESOURCES
-  SOLID WASTE MANAGEMENT PLAN AREAS



Sources: Esri, USGS, NOAA, Sources: Esri, Garmin, USGS, NPS

# ISWMP PLANNING AREAS (MAP)

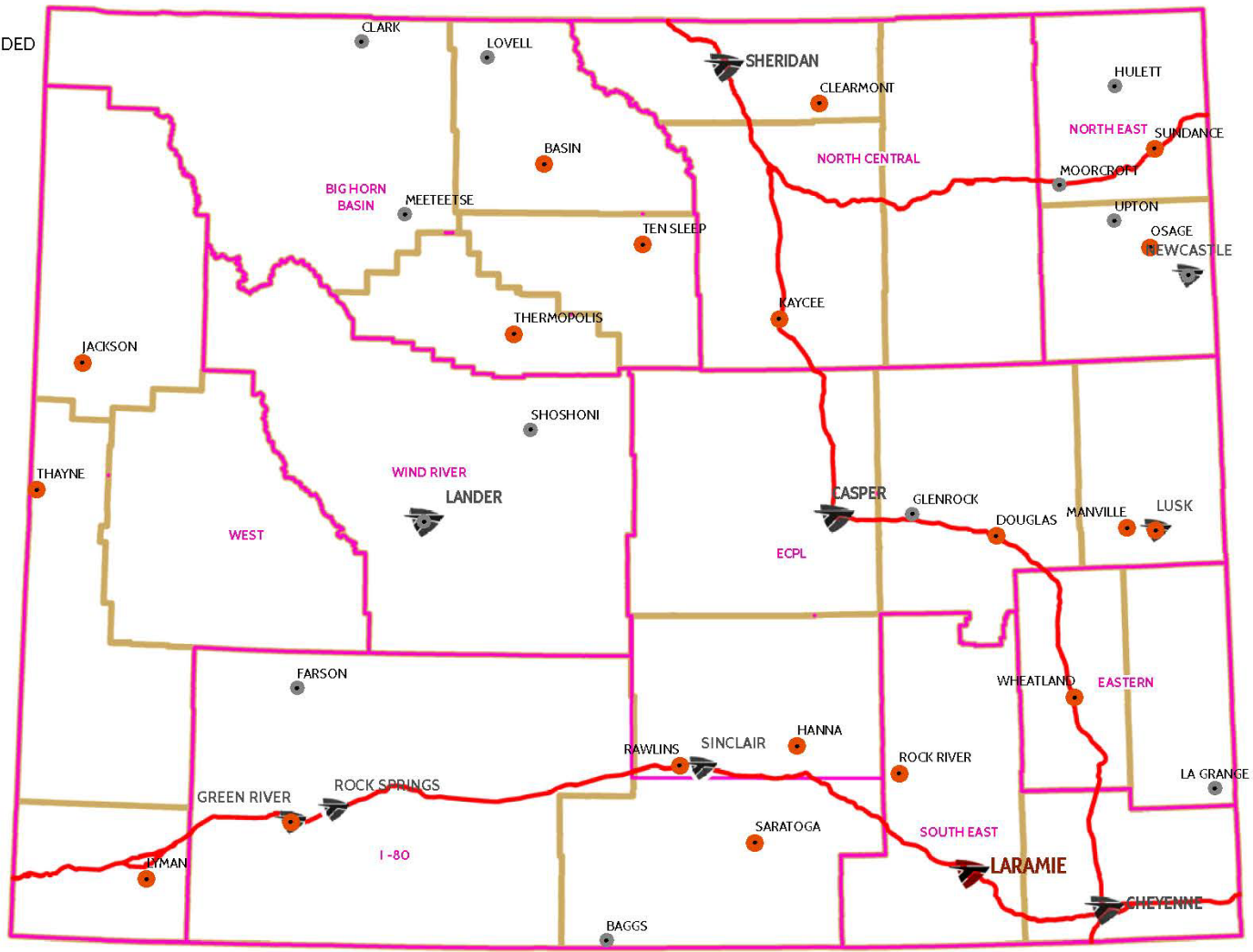
# Cease and Transfer Program Update

- C&T history
- Projects funded to date
- Projects remaining to be funded
- Account balance





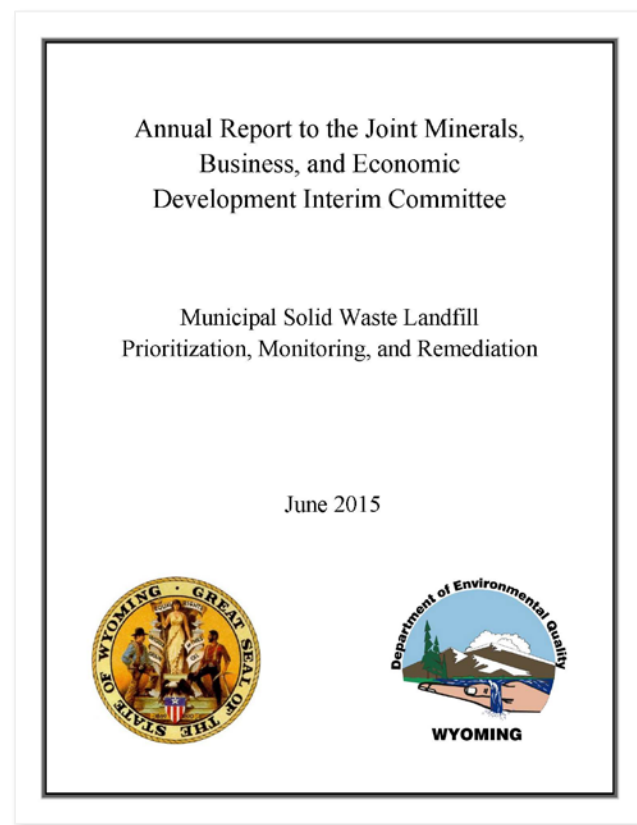
- CEASE AND TRANSFER PROGRAM - FUNDED
- CEASE AND TRANSFER PROGRAM - NON FUNDED
- ▶ CORPORATE HEADQUARTERS
- ▶ WYOMING OFFICES
- ▶ STAFF RESOURCES
- SOLID WASTE MANAGEMENT PLAN AREAS



# C&TP CURRENT STATUS - MAP

# Landfill Remediation Program Update

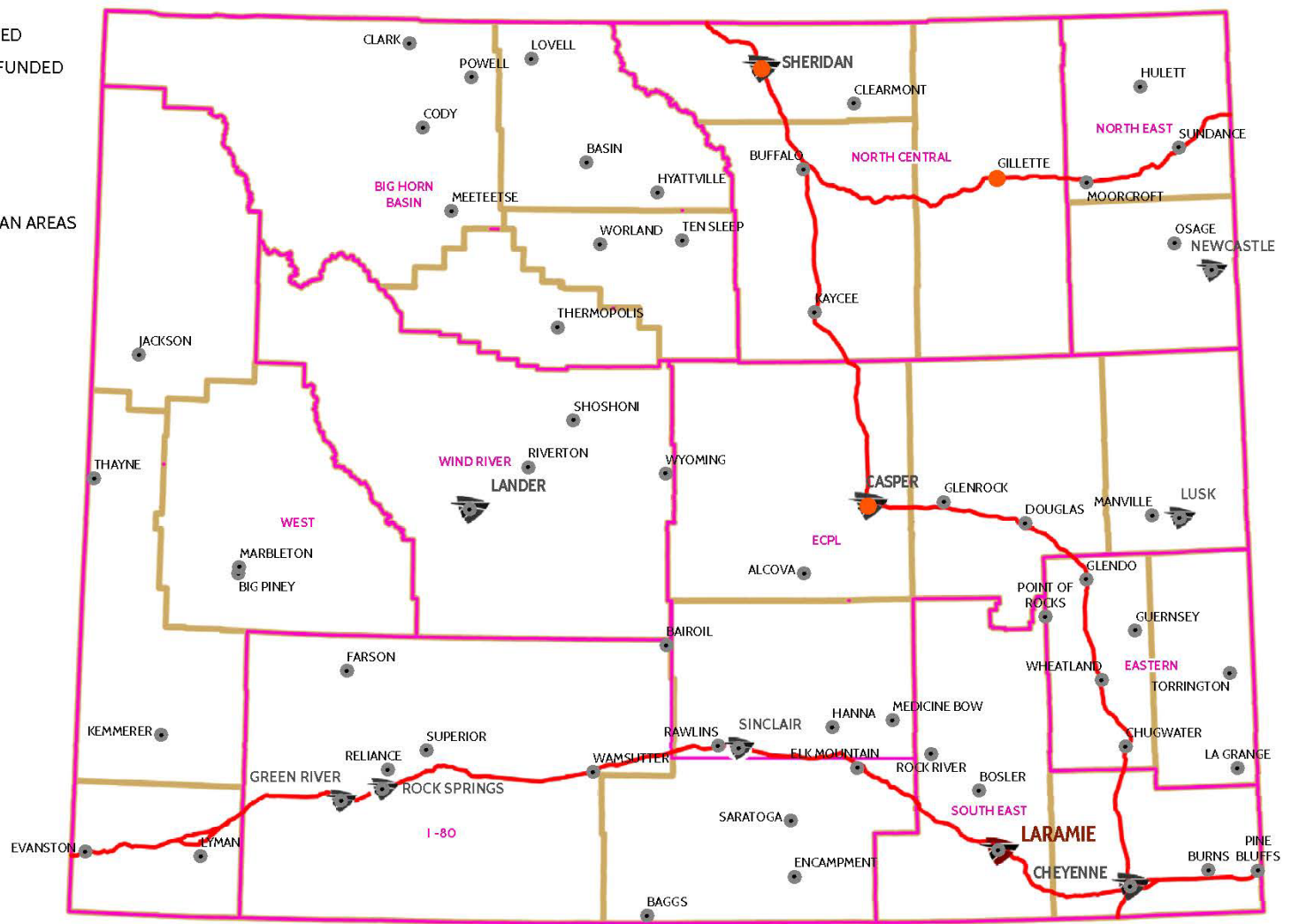
- LRP history
- Priority list
- Projects funded to date
- Account balance







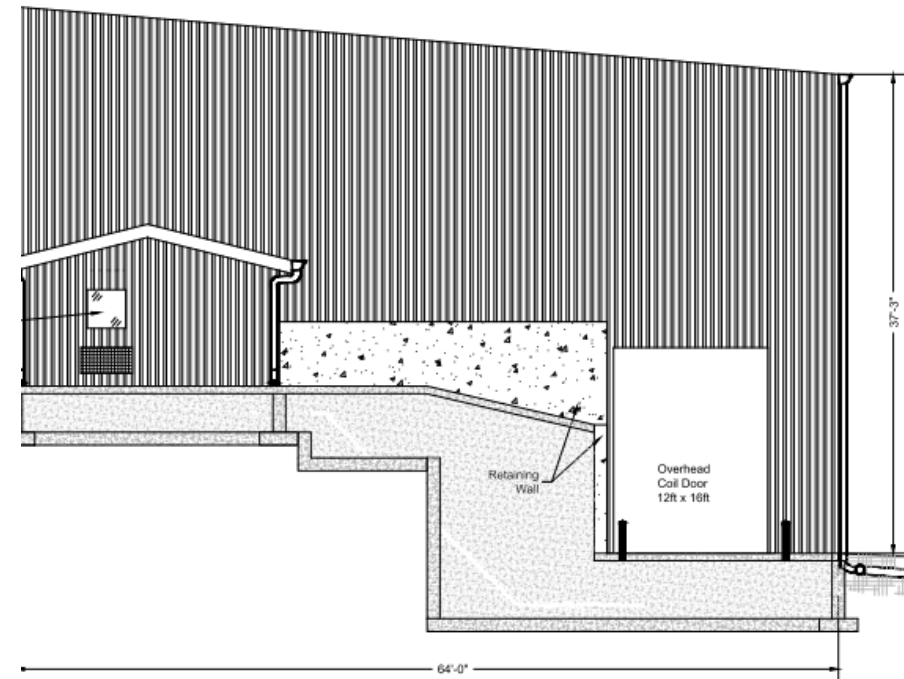
-  REMEDIATION LANDFILL - FUNDED
-  REMEDIATION LANDFILL - NON FUNDED
-  CORPORATE HEADQUARTERS
-  WYOMING OFFICES
-  STAFF RESOURCES
-  SOLID WASTE MANAGEMENT PLAN AREAS



# Considerations

## WASTE TRANSFER

- Transfer Alternatives
  - Direct Haul
  - Private Haul
  - Transfer Station
- Transfer Station Design
  - Gravity Load
  - Mechanical Systems



# High Country Joint Powers Board

- Hanna, Elk Mountain, and Medicine Bow
- SWPW Conducted Transfer Station Alternatives Analysis
  - Evaluated Numerous Options



# Town of Lusk

- Options Evaluated
  - Direct Haul
  - Transfer to Casper
  - Transfer to TDS in Torrington
- Utilized Grade Separation for Trailer Loading



# Wheatland

- Site Considerations
- Conveyor System
- Auger-fed Trailer
- [Video](#)





# Considerations

## LANDFILL CLOSURE

- Final Cover System
  - Geosynthetics
  - Compacted Soil
  - Water Balance Cover
- Site Conditions
  - Soil Availability
  - Site Soil Types
- General Closure Permit
- Identify Pre-Subtitle D Areas
- Costs



# Casper Balefill Closure

- Completed in 2009
- 78 Acre Closure
- Utilized Site Materials
- Reduced Cost from \$6.5 M to \$4.5 M



# Lusk Landfill



- Geosynthetic Final Cover System
- 15 Acre Closure
- Procurement Approach
- \$65,0000/Acre





# Rawlins Landfill Closure

- Geosynthetic Final Cover System
- 68 Acres
- Procurement Approach
- Average Cost \$65,000/acre



# Wheatland Landfill Closure

- Water Balance Cover
- Utilizes Site Soils
- 25 Acre Closure
- Estimated Construction Cost \$1.32 M



# Funding Outlook

- \$38,616,890 C&TP Projects Funded
- \$44,533,000 C&TP Projects Awaiting Funding
- \$44,436,306 LRP Projects Funded
- Value of Remaining LRP Projects Awaiting Funding Has Not Been Determined



# Questions?

WHAT

WHY

WHERE

WHEN

WHO

HOW

