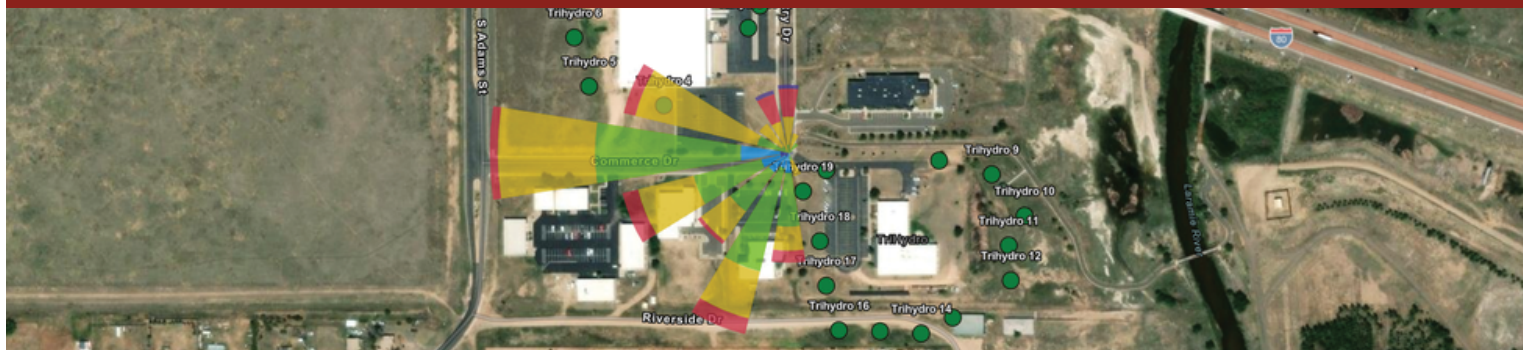


FENCELINE^{PRO}

powered by **Trihydro**

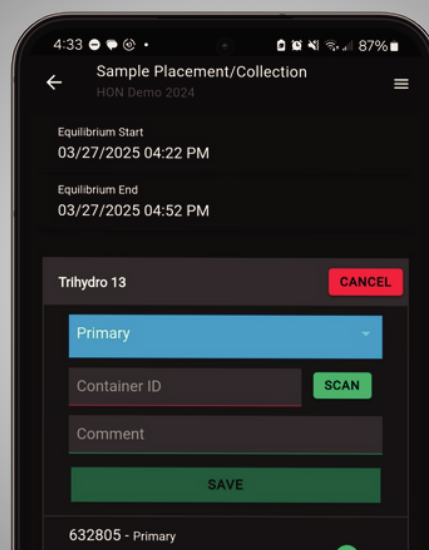
A robust, cloud-based system for environmental professionals to manage and report fenceline monitoring program compliance.



ABOUT

Fenceline Pro™ allows facility personnel to efficiently collect, monitor, and report air pollutant data at the fenceline to comply with federal regulations, such as the EPA HON rule and Refinery Sector Rule (RSR).

With Fenceline Pro™, air compliance teams can improve field data accuracy, track trends, identify contributing factors, and create an easily auditable process.



FIELD DATA CAPTURE

Fenceline Pro mobile app integrated with both Android and iOS for field teams to capture critical sample data.



QUICK CALCULATIONS

Fenceline Pro automatically handles the Delta C calculations, saving compliance teams time and creating program efficiency.



AUTOMATED REPORTS

Download reports with a click of a button. Fenceline data is automatically transferred into CEDRI reporting format.



1-800-359-0251 trihydro.com

Features

PROGRAM COMPLIANCE & REPORTING

- Designed to support Refinery Sector Rule (RSR) requirements, Hazardous Organic NESHAP (HON) fenceline monitoring requirements, and voluntary programs
- Compatible with Methods 325 and 327
- Accommodates Site-Specific Monitoring Plans (SSMPs)
- One-click generation of CEDRI reports and sample period flash reports

FIELD DATA COLLECTION

- Streamline workflows with automated data capture
- Automatically log sample placement and collection times
- Offline field data collection for flexibility in remote environments

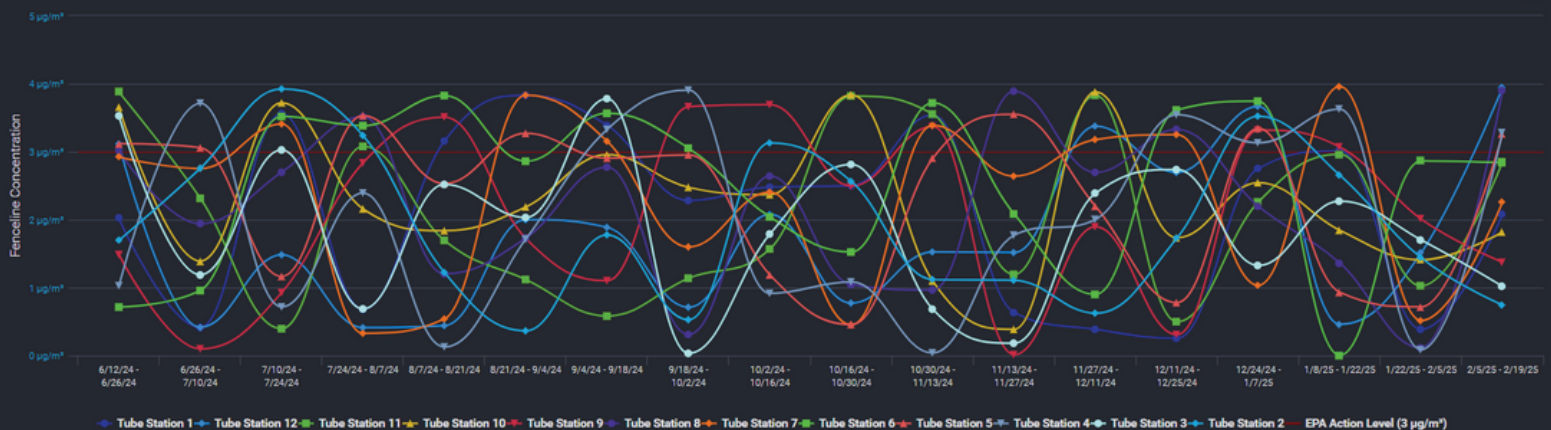
ALERTS & NOTIFICATIONS

- Get notifications for missing samples and incomplete sample period data
- Get alerted when lab results are above the EPA Action Level
- Never miss a reporting deadline with EPA submission reminders

DATA MANAGEMENT

- Access digital data immediately for Chain of Custody (COC) generation
- Generate windrose diagrams using automatically integrated site weather data
- Visualize trends and spatial insights through dynamic charts and GIS-enabled maps
- Ensure data integrity with built-in validation workflows

COMBINED LOCATIONS FOR 1,3-BUTADIENE



Take your fenceline data management to the next level.
Request a demo of Fenceline Pro™ and experience the difference.

SCHEDULE A DEMO



KARI WARD, PMP
Sales Director
970-493-1179
kward@trihydro.com



1-800-359-0251 trihydro.com